


CRE ART BOX

EPK
2018/19

 (646) 287 3158

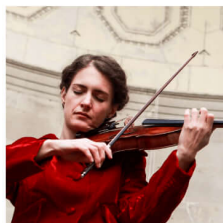
 info@creartbox.nyc



Josefina Urraca
pianist & managing director



Guillermo Laporta
flutist & artistic director



Mélanie Clapiès
violinist



Julia Yang
cellist



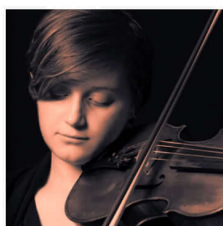
Jonathan Cohen
clarinetist



Anton Rist
clarinetist



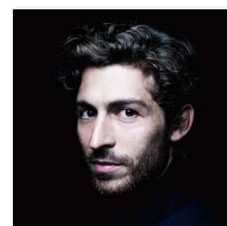
Brigid Coleridge
violinist



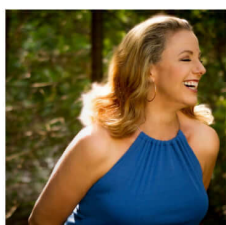
Clara Vázquez Ledesma
violinist



Doug Perry
percussionist



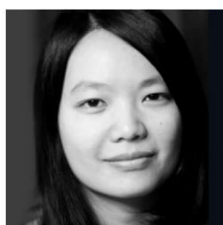
Jacopo Rampini
actor



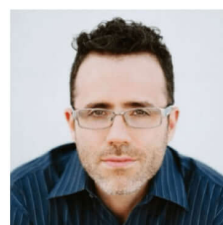
Janna Baty
singer



Jen Fok
light design



Johnna Wu
violinist



Joshua Penman
composer



JP Joffre
bandoneonist and composer



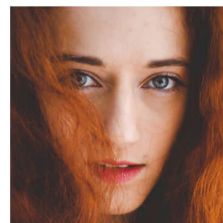
Keir GoGwilt
violinist



Lewis Lockwood
writer



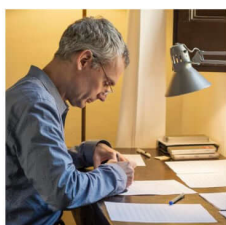
Marcos Fernández
composer



Marissa Maislen
dancer & choreographer



Ransom Wilson
conductor



Reiko Fueting
composer



Rick Cekovsky
Actor



Sebastian Currier
composer



Todd Reynolds
violinist & composer



Yves Dharamraj
cellist

Awave

flute piano & electronic



AWAVE is a multimedia concert experience offering an entirely **new body of repertoire** for solo flute, piano, video, and sound design written by Guillermo Laporta.

Rooted in the influences of the **symphonic** sound, classical **chamber music**, theatrical **sound design**, and **soundtrack** composition. AWAVE blends sound and space through Guillermo's own music, words, and images.

Through musical documentary, this journey presents portraits of real people, **field recordings** of the environment from all over the world and **custom made electronic generated sounds**.

This performance has an open, modular structure: each piece of music can be combined in varied ways, **following a visual and acoustic emotional flow** rather than a written narrative.

Program

Guillermo Laporta
AWAVE

I Light Hymn
II Craziest Things
III Ferry
IV Steps
V Morse
VI Waiting for the light

Marcos Fernandez
Mikado

Jacob ter Velhuis
Lipstick

Folk culture

violin, cello & piano



Folk Culture embraces one of the most popular traditional classical music ensembles: The **piano trio**.

This is a performance constructed around the **refined style of 18th century chamber music period**, with a re-contextualization of the music for today's world.

The program with music by Brahms, Beethoven, and Rachmaninov is **curated by pianist Josefina Urraca** who portrays the **influences of folk music** and nationalism finding its way into great works in the chamber repertoire, in varying degrees, and under vastly different circumstances.

Program

Frank Martin
Trio on Irish Folk Tunes

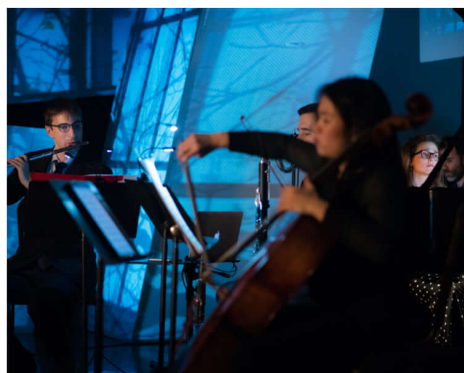
Antonín Dvořák
Dumky trio

Ludwig van Beethoven
Kakadu variations op.121a

Sergei Rachmaninoff
Trio Elegiaque n. 1

Just as they are

flute, clarinet, violin, cello and piano



Just As They Are present the **full core ensemble** of CreArtBox (flute, clarinet, violin, cello, and piano) with a modular set design and a unique visual and interdisciplinary approach.

This program develops its own visual component, dramaturgy and aesthetic, merging **live classical music, visual art, dance and technology** to explore how light, projection and sound intersect in their purest forms.

Each piece is developed around commissioned **new creations** from emerging and established living composers as well as classical music from the 17th century onwards.

Program

Claude Debussy
(arr. Michael Webster)
Petite Suite

David Lang Sweet air
Telemann
Flute quartets (selection)

Anna Clyne
Just as they are

Brahms Trio op.114

Joshua Penman Dawnlight

Marcos Fernández Eclipse

Visuality



flute, clarinet, violin, cello, piano, dancer & actor. TOTAL 7 artists

Visuality is a full-scale music and theater production which develops a narrative inspired by studies by Sigmund Freud, Carl Rogers where a psychoanalyst, explores the deepest thoughts of his mind through **music, poetry, and observation**.

Written by Guillermo Laporta and Jacopo Rampini and choreographed by Marissa Maislen, this production, fuses the music of Sebastian Currier, Joshua Penman, Debussy, Paul Moravec, Jacob TV, Joan Tower, Marcos Fernandez, and Frederic Rzewski.

The main chracter, Dr. Reyn narrate a meditation on a human mental exploration. Gradually discovering his own **bipolar disorder exposing his self-consciousness** in the physical universe and unveiling complex, mysterious, visceral stories that outcrop beyond the reality.

Dr. Reyn inner mind is reflected in the commutable **set design where cubes surround the scene**, the musicians and the audience, utilizing video mapping techniques to bring to life this captivating world.

Program

Marcos Fernández
Eclipse and Northumbrian

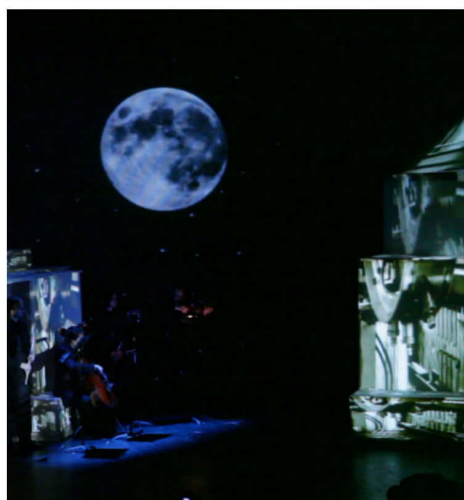
Debussy
Piano trio in g minor

Joshua Penman
Mariri

Sebastian Currier
Selection from Verge and Static

Paul Moravec
Time Gallery

Noctum



flute piano & electronic

One of the first **lunar eclipses** observed by humans gave rise to hundreds of stories that tried to explain that phenomenon. In this story, the **nightmare revealed** for the first time in the world of dreams.

Érebo, a dark creature that wanders among the shadows, lives in a dark world observing how dreams are created for the rest of the people. **Érebo does not know what it is to dream**, however, he observes each night as Elhüa, goddess of the night, places the moon in the sky to begin unfolding the dreams of people.

One day Érebo, disturbed by his curiosity, ascends to the human world and **decides to steal the moon** believing that with it in his hands he can immerse himself in the world of beautiful dream and fantasy.

However, all his attempts are unsuccessful, and desperate for his failure, he decides to **break the moon into thousands of pieces**, without being aware that with this act he is destroying the world of pleasant dreams, to **generate the world of nightmares**. Elhüa, meanwhile, will try desperately to find the moon, or people will suffer nightmares night after night to never rest again.

Music by
Marcos Fernández

Libretto by
Guillermo Laporta
& Tagore González

Set & light design
David Orrico

Assistant Dramaturg
Natalia Calderón

Mahler 4th



chamber orchestra

In collaboration with **Le Train Bleu**, CreArtBox performs this masterpiece with guest artist soprano **Janna Baty** conducted by **Ransom Wilson**.

This piece was re-imagined at the end of the WWI, when **Arnold Schönberg** established his Society for Private Musical Performances, to give his Viennese subscribers the chance to hear modern music performed.

The Society's resources had limits: only chamber orchestra performances could be supported, no matter how big the original work. So when **Erwin Stein** arranged Mahler's Fourth Symphony for the Society in 1921, he managed to reduce the forces to soprano and twelve players.

Program

Martin Bresnick
My Twentieth Century

Gustav Mahler
4th Symphony arr. Erwin Stein

CreArtBox's mission is to engage audiences by presenting high-quality performances of new music written by emerging and established living composers as well as classical music from the 17th century onwards, alongside innovative visual and performance designs (set, light, & projection).

The group's core regularly functions as a flute (Guillermo Laporta), clarinet (Jonathan Cohen), violin (Mélanie Clapiès), cello (Julia Yang), and piano (Josefina Urraca) music ensemble, but holds a flexible roster of over twenty NYC-based soloists, composers, choreographers, actors, and designers

CreArtBox's members have been invited to participate in different Festivals such as Yellow barn, Prussia Cove, Perlman Chamber Music Player, Marlboro Music Festival and they have been part of prestigious orchestras such as Metropolitan Orchestra, American Ballet Theater, Orchestra of St. Luke's, Louisiana Philharmonic, St. Paul Chamber Orchestra, New World Symphony Orchestra, Oviedo Filarmonia, BBC Orchestra, Euskadi Filarmonia, among others.

The first concert of CreArtBox in New York was at the National Opera Center in 2013 and since then the group has received the attention from Time Out, Washington Post, Times Ledger, HITN TV, The Huffington Post, Free Times, I care if you listen, Broadway World, Carpe Diem!, Spain Culture NY, and the Washington City Paper.

CreArtBox has been described as "a wholly authentic, visually and aurally compelling experience" (Broadway world) and "a new ensemble devoted to multidisciplinary events" (Time Out New York).

CreArtBox is devoted to presenting new chamber music, working closely with commissioned composers. The group has commissioned the pieces "Mariri", "Dawnlight" and "Moontides" from the American composer Joshua Penman, the pieces "Mikado", "Eclipse", and "Concerto for Flute and Clarinet" from the Spanish composer Marcos Fernandez, and a series of solo pieces entitled "Moment of Solitude" from the American composer Greg Karnilaw.

On every commissioned piece, a complete set of live performance tools, such as live audio and projection controllers, video mapping software, light and projection software to interact with the music, is presented to the composer as part of the ensemble. This offers composers a vast creative canvas for their music and a broad perspective of the performance.

In September 2016, the group founded the CreArt Music Series. This new music series gathers world-class musicians, composers, designers, and visual artists such as Todd Reynolds, Luke DuBois, Le Train Bleu, conductor Ransom Wilson, bandoneonist and composer JP Jofre, musicologist Lewis Lockwood, Joshua Penman and Sebastian Currier, to create unique performances deeply committed to the production of new music for a wide audience.

In December 2016, CreArtBox presented their large scale theatrical production *Visuality* at the Queens Theatre, with projection-mapped video, aerial acrobatics, and dance, telling a surreal story that probes the fluid boundaries between reality and fantasy in the mind of a disturbed psychoanalyst.

In August 2018, CreArtBox launched the CreArt Music Festival, in collaboration with the Plaxall Art Gallery and with the support of the Queens Council on the Arts.

CreArtBox records regularly at Oktaven Studios, with sound engineer Ryan Streber. In 2016, they released the album *Moment of Solitude*, a monographic CD of solo pieces by American composer Greg Karnilaw. In June 2019, the group will record their second album, featuring the music of Joshua Penman.

The group has received numerous distinctions, including awards from the INJUVE Chamber Music Competition, Montehermoso Contemporary Creation Award, Savvy Musicians in Action Chamber Music Competition, the Queens Council for the Arts, and the Amphion Foundation.

In New York City, the ensemble has performed at the Queens Theatre, Le Poisson Rouge, DiMenna Center, Spectrum, Flamboyant Theater, New York for Ethical Culture, The Tank Theater, National Opera Center, Steinway Hall, Cervantes Institute, with other performances in Artisphere Theater, (Washington DC), and Tapp Center (Columbia, South Carolina).

Quintets and sextets

Timo Andres: Formal Conceits

Anna Clyne: Just as they are

Beethoven: Quintet for Piano and Winds (transcription)

Sebastian Currier: Static (selection)

Bryce Dessner: Murder Ballades

Marcos Fernandez: *Eclipse and *Opera Noctum

Jenifer Higdom: Zaka

Greg Karnilaw: A is for Aye-Aye

Paul Moravec: Time Gallery

David Lang: Sweet air

Joshua Penman: *Dawnlight, *Moontides and *Mariri

Frederic Rzewski: Coming Together

Michael Torke: Telephone book

Joan Tower: Petroushkates

Jacob TV: Jesus is coming (transcription for quintet)

Dana Wilson: Dancing with the Devil

Other formations

Bartok: Romanian Folk Dances

Beethoven: Kakadu variations op.121a

Brahms: Trio op.114

Martin Bresnick: My Twentieth Century

John Cage: Melodies

Cecile Chaminade: Concertino for Flute, op 107

George Crumb: Vox Balaenae

Sebastian Currier: Verge (selection)

Debussy: Violin Sonata, Piano trio in g minor, Petite Suite (arr. Michael Webster) and Sonata for Flute, Viola and Harp

Dvorak: Dumky trio

Enesco: Cantabile et Presto

Marcos Fernandez: *Mikado and Northumbrian

Philippe Gaubert: 3 Aquarelles

Judd Greenstein: Untitled (finding something special)

JP Jofre: Como el Agua and Universe

Greg Karnilaw: *Moments of Solitude

David Lang: Short Fall

Guillermo Laporta: *AWAVE for flute piano & electronic

Gustav Mahler: 4th Symphony (arr. Erwin Stein)

Frank Martin: Ballade and Trio on Irish Folk Tunes

Meredith Monk: Lullaby

Gabriel Pierné: Voyage au pays du Tendre

Francis Poulenc: Sonata for Flute and Piano

Rachmaninoff: Trio Elegiaque n. 1

Ottorino Respighi: Violin Sonata in B minor

Albert Roussel: Serenade Op. 30

Florent Schmitt: Pour presque tous les temps

Georg Philipp Telemann: Flute and harpsichord sonata (selection) and flute quartets (selection)

Jacob TV: Lipstick



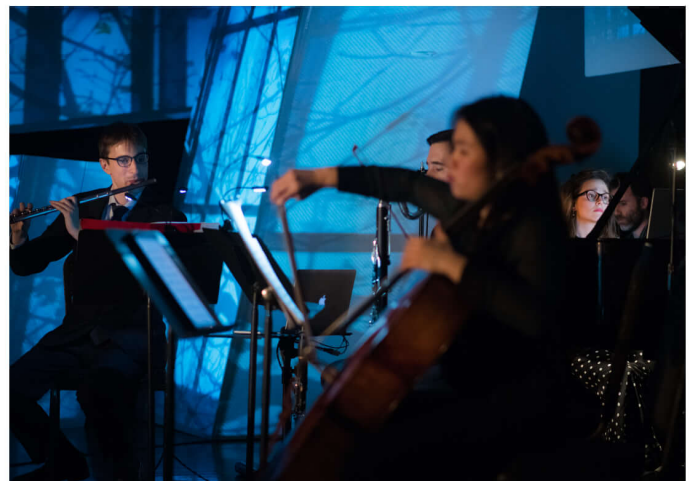
Performing Static by Sebastian Currier



Performing Time Gallery by Paul Moravec



Performing My Twentieth Century by Martin Bresnick



World premier of Daylight by Joshua Penman



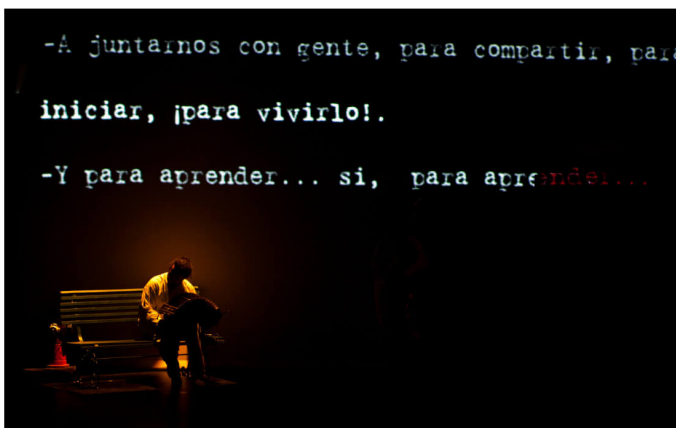
Performing Mahler 4th Symphony (arr. Erwin Stein)



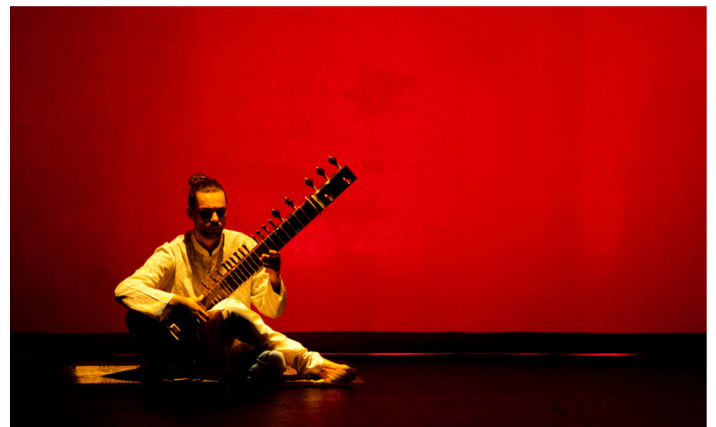
A scene from London the show



With guest artists Todd Reynolds and Luke DuBois



With guest artist, Luis Caruana, bandoneon



With guess artist Sitar



Rehearsing the Opera Noctum



Performing Mariri by Joshua Penman



Performing Coming Together by Frederic Rzewski



Performing Time Gallery by Paul Moravec



With Jacopo Rampini, actor



Openin scene of London "the show"



Sold out at the Queens Theatre



Performing Piano trio in g minor by Claude Debussy



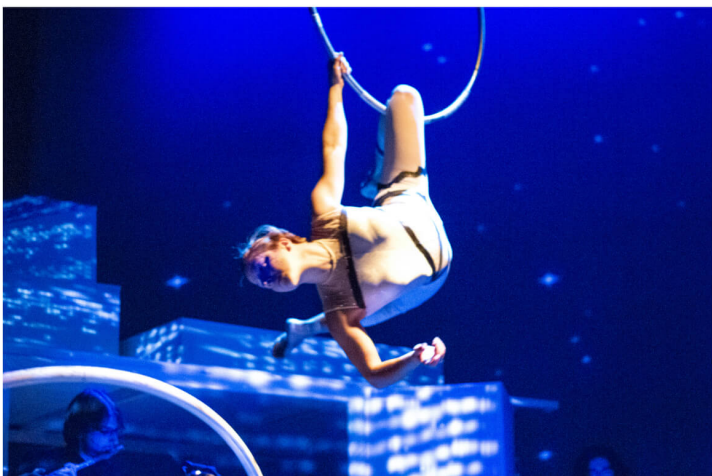
Pre-concert talk by Lewis Lockwood
Kakadu variations op.121a by Beethoven



Performing Awake by Guillermo Laporta



Erebo, main character of the opera Noctum.



At the Barakaldo Theater, Spain



Performing Trio Elegiaque n.1 by Rachmaninoff



Performing AWAVE by Guillermo Laporta



Performing Kakadu Variations op.121a by Beethoven



Performing Vox Balaneae by George Crumb



With guest artist JP Jofre



Performing Murder Ballades by Bryce Dessner

"Directed by CreArtBox's Guillermo Laporta and Josefina Urraca, the **remarkable production** (VISUALITY) fuses together a variety of art forms to create a **wholly authentic, visually and aurally compelling experience**"

Broadway World

"CreArt Festival offers **unique take on classical music**"

Queens Ledger

"You should check out this amazing presentation of Guillermo Laporta's AWAVE"

Times Ledger

"a new ensemble devoted to multidisciplinary events"

Time Out

"If you need a break from your same old Spotify playlist, and crave your culture fix, mark your calendars and reserve your tickets for the CreArt Music Festival, where you're bound to discover **something unique and unexpected**"

QGuide

"**innovative classical and chamber music series** in collaboration of living composers, world-class soloist and visual artists."

The Westsider

"**a shocking staging**"

El Pais

"Classical Group combines past a present with Grammy winner at Ethical NYC."

Broadway World

"Attendees can expect everything **from mobile sculptures to journeys through light** and darkness to meet the spirit of healing plants.

QNS.com

"This piece (VISUALITY) had **something for a wide variety of arts lovers**, including music, animation, lyrical dance, and funky lighting effects

Brightest Young Things magazine.

"a full scale set design and a **unique visual approach**"

I care if you listen magazine

lic

LONG ISLAND CITY COURIER
LIC // ASTORIA // SUNNYSIDE
VOLUME 9 NUMBER 8 AUGUST 2018

CreArt Music Festival Heads to LIC

The World's Fare Coming To LIC
Page 46

Page 18

Photo courtesy of CreArtBox

■ Sudoku 37 ■ Arts & Entertainment 37 ■ Crossword Puzzle 38 ■ Guide to Dining 41

TimesLedger, August 17-23, 2018

Q GUIDE

TO THE ARTS, ENTERTAINMENT AND DINING

The CreArt Music Festival is a brand new festival set to launch Aug. 31 in Long Island City. Photo by Joe Jenkins

Music with a twist

CreArt Festival offers unique take on classical music

BY TAMMY SCILEPPI

He was once dubbed “a six-and-a-half-foot tall scowl,” appearing somewhat cold and aloof.

Few people know that he had a passion for fast cars and speedboats — which didn’t really go with his personality. That he married his first cousin in Russia, had two daughters, and lived in sunny Los Angeles, where he built a house that was an exact replica of his home in Moscow. Surprisingly, he owned the first automobile in his neighborhood.

Some thought it was rather prophetic that his final recital in February 1943 included Chopin’s famous funeral march. A heavy smoker, he died from lung cancer a month later in Beverly Hills, four days before his 70th birthday.

Brilliant Russian composer, pianist, and conductor Sergei Rachmaninov (or Rachmaninoff), born 1873, may have been blessed with the largest hands in classical music,

which is why some of his pieces have been described as fiendishly difficult for less well-endowed performers. He could span 12 piano keys from the tip of his little finger to the tip of his thumb.

But rumor had it the musical genius could do nothing right by most of his contemporary critics’ and composers’ standards, even though he had composed an impressive number of awesome pieces, including the Cello Sonata and the Second Suite for Two Pianos, both in 1901.

In 1931, his music was officially banned back in the USSR as ‘decadent,’ with the chilling warning: “This music [The Bells] is by a violent enemy of Soviet Russia: Rachmaninov.” Apparently, great works weren’t appreciated in his homeland as they were everywhere else.

The serious-looking composer would probably crack a smile if he knew his music was being performed at a new classical music festival in trendy Long Island City.

He’ll probably be there in spirit.

If you need a break from your same old Spotify playlist, and crave your culture fix, mark your calendars and reserve your tickets for the CreArt Music Festival, where you’re bound to discover something unique and unexpected. Three evening concerts — from Friday, Aug. 31, through Sunday, Sept. 2 — will present classical music with a cool, modern twist by incorporating other disciplines into each concert.

The result? Musical fusion, Queens-style.

Classical chamber music by Brahms, Rachmaninov, and Beethoven fused with contemporary dance, theater, and immersive sound, light and projection design, utilizing video mapping projection along with stunning visual installations.

The festival lineup will feature violinist Mélanie Clapiès, cellist Julia Yang, flutist Guillermo Laporta, clarinetist Jonathan Cohen, pianist Josefina Urraca, and dancer/

choreographer Marissa Maislen, and will take place at the Plaxall Gallery (5-25 46th Ave., LIC).

In collaboration with Long Island City Artists (LIC-A) @ The Plaxall Gallery and supported by the Queens Council on the Arts, the CreArtBox Music Ensemble’s very first CreArt Music Festival — directed by Sunnyside musicians Guillermo Laporta and Josefina Urraca — will be celebrating the wonderful world of classical music with Queens audiences.

Broadway World hailed the event as “A wholly authentic, visually and aurally compelling experience...”

“For me, this is a very special performance because I am going to premiere a collection of new pieces written by me for flute, piano and electronic, and also the set design that I am working on will be kept as a temporary multimedia installation at The Plaxall Gallery,” Laporta explained.

Continued on Page 39



Music, Classical and opera \$\$\$

TIME OUT SAYS

DETAILS

USERS SAY

A new ensemble devoted to multidisciplinary events makes its debut with a concert designed by flutist Guillermo Laporta, who gathers a handful of very sharp freelance musicians—including cellist Yves Dharamraj and bandoneon virtuoso J.P. Jofre—as well as choreographers and visual artists. The group's maiden voyage is set to works by Mussorgsky, Duruflé, Jofre, George Crumb, Jacob ter Veldhuis and Marcos Fernández.

POSTED: WEDNESDAY JULY 31 2013



I CARE IF YOU LISTEN



The third concert, titled "Just As They Are", will present the full core ensemble of CreArtBox (flute, clarinet, violin, cello and piano) with a full scale set design and a unique visual approach. This will be the grand finale of the CreArt Festival. Repertoire will include music by Anna Clyne, Joshua Penman, Johannes Brahms, Marcos Fernandez, Georg Philipp Telemann, and David Lang.

Sunday, September 2 at 8:00 PM

\$5 suggested donation

Plaxall Gallery, 5-25 46th Avenue, Long Island City, NY

...: [Website](#)

GET POSTS LIKE THIS IN YOUR INBOX

Subscribe to our newsletter to get weekly recaps, album giveaways, mixtapes, and more.

Your email address



CreArtBox and Le Train Bleu Join Sixth Edition of the CreArt Music Series

by BWW News Desk Feb. 19, 2018



Tweet



Share



CreArtBox and Le Train Bleu will perform at the sixth edition of the CreArt Music Series at the New York Society for Ethical Culture, 2 W 64th St, New York, by 7 : 30 pm on Friday the 30th of March, 2018. In this edition, musicians of Le Train Bleu and CreArtBox will play together the chamber music arrangement by Erwin Stein of Gustav Mahler's Fourth Symphony with guest artist, soprano Janna Baty and conducted by Ransom Wilson.

CreArtBox serve as ensemble - in - residence at the New York Society for Ethical Culture. Directed by Guillermo Laporta and Josefina Urraca, the group gathers world - class musicians, composers, designers, and visual artists to create innovative multimedia and visual designs that enhances the musical experience, creating a performance that reaches a wider audience than traditional chamber music performances. The group has been described as " a wholly authentic, visually and aurally compelling experience " (Broadway World) and " a new ensemble devoted to multidisciplinary events " (Time Out New York).

Le Train Bleu ' s musicians are among the most exciting young players in New York and are chosen for their brilliance and expressive qualities. The New York Times said of their 2010 debut performance : " Under Mr. Wilson's baton, Le Train Bleu ensemble was both incisive and joyous in execution. " Recently, Le Train Bleu appeared at the Arts and Ideas Festival and the River to River Festival in New York City. Last April they released their first CD on the Innova label, and in August were in residence at the Bravo ! Vail festival in Colorado.

The present season sees Le Train Bleu in collaboration with the Lar Lubovitch Dance Company, in concert at the New York Botanical Garden, in residence at the Ocean Reef Festival in Florida, and in concert at the 92nd St. Y. Established in September 2016, CreArt Music Series at the New York Society for Ethical Culture offers classical chamber music and new musical pieces by living composers such as David Lang, Meredith Monk, Joshua Penman, John Cage, Timo Andres, Anna Clyne, Sebastian Currier, Judd Greenstein, Marcos Fernandez, Bryce Dessner, Telemann, Gaubert, Rachmaninoff, Dvořák, Debussy and Beethoven.

Tickets are available at www.creartbox.nyc

CreArt Music Festival

Continued from Page 35

He and Urraca founded the music group when they moved to NYC in 2012, so diverse audiences could enjoy the beauty of classical music. CreArtBox's mission is an important one because more people — especially young adults and even teens — throughout local communities and beyond, will now have the opportunity to enjoy high-quality, dynamic performances of innovative music written by emerging and established living composers, as well as classical music from the 17th century onwards that uses innovative visuals and set designs.

"Long Island City is always looking forward to creating a sense of community. We believe that music has the power of bringing people together and the CreArt Music Festival can be a great



The festival will be directed by flutist Guillermo Laporta and pianist Josefina Urraca, who both founded the music group CreArtBox in 2012.

Photo by Jill Steinberg

way to support that desire in this neighborhood," Urraca said, adding, "And it will not be just classical music, we will join forces with new composers and present every concert with an exciting stage and projection design."

Friday, Aug. 31, 8 p.m.: "Folk Culture" (Piano trio, violin, cello and piano)

Reserve your tickets for opening night and before you know it you'll be zoning the world out. This work explores mu-

sic written for violin, cello and piano, and popular tunes in classical music. Repertoire will include: Beethoven's Kakadu variations op. 121a, Rachmaninoff's Trio Elegiaque number 1, Franck Martin's Trio on Irish Folk Tunes, and Dvorak's Dumky Trio.

Saturday, Sept. 1, 8 p.m.: "Awave" (Flute, piano and electronics)

You should check out this amazing presentation of Guillermo Laporta's "Awave," which

blends years of opera, symphonic and chamber music performances with multimedia sound design and sound track composition. The performance will present a collection of pieces written for VR experiences, theatrical sound design and video games. It will also feature the world premiere of 10 new pieces for flute, piano and electronics.

Sunday, Sept. 2, 8 p.m.: "Just as They Are" (flute, clarinet,

violin, cello, piano and dancer)

Don't miss the exciting third concert, which will present the full core ensemble of CreArtBox with a full-scale set design and a unique visual approach. This will be the grand finale of the festival.

So, why should folks experience this festival? What makes it special?

"People should come because we perform some of the best music ever written and every-

one should experience the magic of this music first hand," Laporta said, adding, "On the other hand, we create an experience around these composers that goes beyond the music."

Why did you choose Plaxall as your venue?

"We decided to partner with Long Island City Artists (LiC-A) at The Plaxall Gallery because we loved the location and the space. We also like to present classical music on nontraditional spaces and bring our music to this new and trendy neighborhood," Laporta said.

"Also, the open layout of the Gallery offers us the ability to create the visual installation that we imagined for these kind of performances."

A multimedia opera titled "Two Roads" and a new album are in the works, along with the next season of the CreArt Music Series, according to Laporta.

All performances are open to the public with a \$5 suggested donation. To reserve tickets, visit creartbox.typeform.com/to/B0QzSx.

TIMES *Ledger*

Serving Queens since 1919

DECEMBER 2, 2016 / OPINION / MUSIC

Visuality gives music a brand new look



Courtesy CreArtBox

"Visuality" brings together music, choreography, sculpture and video installations.

By Merle Exit

SUBSCRIBE

SHARE ON FACEBOOK

Get our stories in your inbox, free.

Email

Multidisciplinary music ensemble CreArtBox, which is based in Sunnyside, will bring a powerful combination of various art forms to the Queens Theatre Saturday night.

"Visuality," directed by CreArtBox's Guillermo Laporta and Josefina Urraca, employs cutting-edge technology to enhance a repertoire that includes works by such classical composers as Beethoven and Claude Debussy, as well as new compositions. The audience can expect experiments with light and sound from painters, sculptors, choreographers, dancers, writers and more.

"Queens Theatre is perfect for our production," said Laporta. "The core of the show is classical music that we will combine with contemporary music and visual art. For instance, as our closing piece, 'Eclipse,' we have Spanish composer Marcos Fernandez, who was inspired by the music of Mike Oldfield's Tubular Bells combined with video inspired by DJ Amon Tobin's visual projections. There will be 100 cubes each with a video-mapping projection."

That kind of 3D video mapping lets Visuality create a kind of intensified reality, enhancing the space in which the show is presented. CreArtBox has long been known for merging classical music with groundbreaking technology, transforming the traditional concert stage into a multimedia canvas. Since the ensemble's beginnings in Spain, they have performed at an array of notable venues and festivals in both their home country and the United States.

The pieces being performed this weekend bring CreArtBox's innovative approach into clear focus. "Sleepers Awake" combines original choreography and Joshua Penman's music in a work inspired by the human figures in a painting by Toby Heifetz, also entitled "Sleepers Awake." Its fusion of dance, music and painting conveys a sense of levitation, playing subtle games with the viewer's perceptions.

"Excess," with original music by Sebastian Currier, brings together music, theater, dance, acrobatics and video mapping to explore the culture of "too much" in today's world, and how people react to this constant sensory overload.

"Coming Together" brings a somber event from America's past into view. Written by American composer Frederic Rzewski, it is based on a letter Samuel Joseph Melville wrote from prison in Attica in New York a few months before he was executed in 1971 during the riots in which 1,000 prisoners rebelled and took control of the prison to demand better living conditions.

Other pieces to be performed in Saturday's program include "Northumbrian," a piece by Paul Moravec that addresses Celtic culture and makes use of the bagpipes known as Northumbrian pipes. There's also "Piano Trio," in which Marissa Maislen's choreography joins forces with Claude Debussy's, Piano Trio in G Major to transport the viewer into a world of dreams.

And in what is described as "a round trip journey from visual art to music," the ensemble's "Percussion Interlude" takes the music of Jacob Ter Veldhuis, inspired by the mobile sculptures of Naom Ben-Jakov, and gives it a high-tech visual interpretation through the video creations of Guillermo Laporta.

Each of these works is meant to be an example of CreArtBox's unique artistic goal of letting each element of a work develop its own independent aesthetic while also creating a unified and challenging environment for the spectator.

More information about Visuality can be found on www.visuality.nyc.

Updated 10:40 am, December 2, 2016

FLUSHING: Actress Renee Taylor's show may leave you wanting more

FLUSHING: Lincoln Center brings the show to Queens

Permalink

Email to a friend